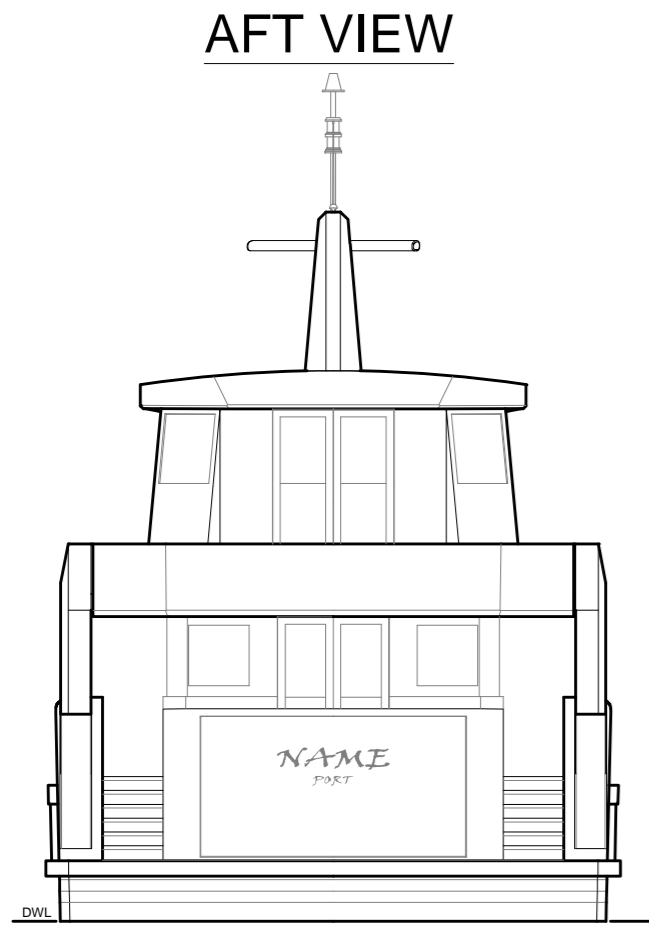


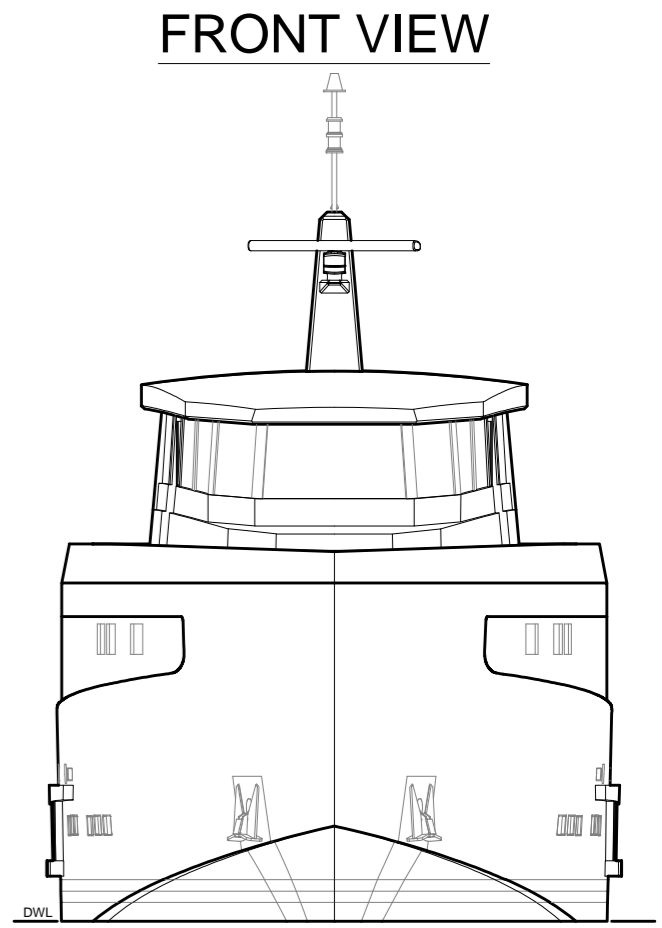
CL. ELEVATION



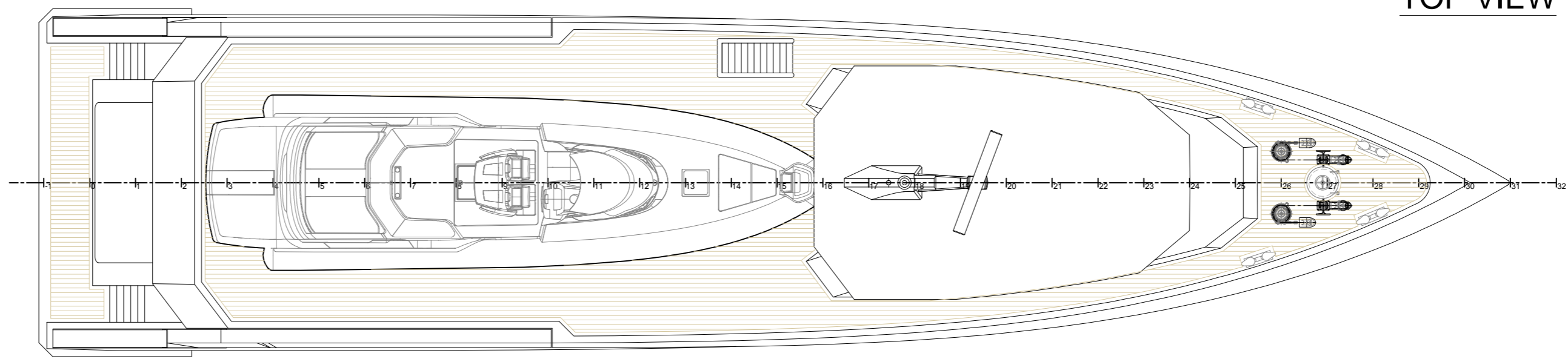
AFT VIEW



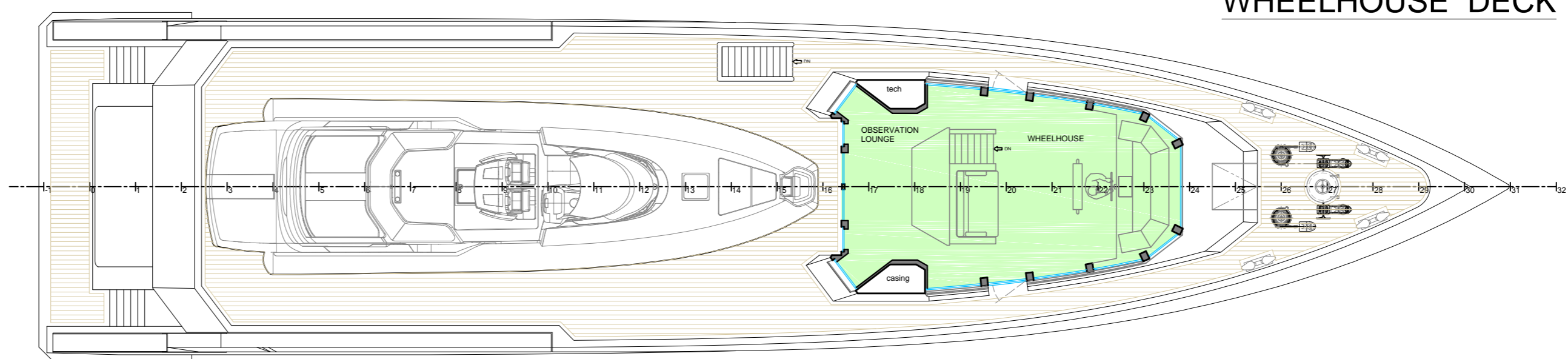
SB PROFILE VIEW



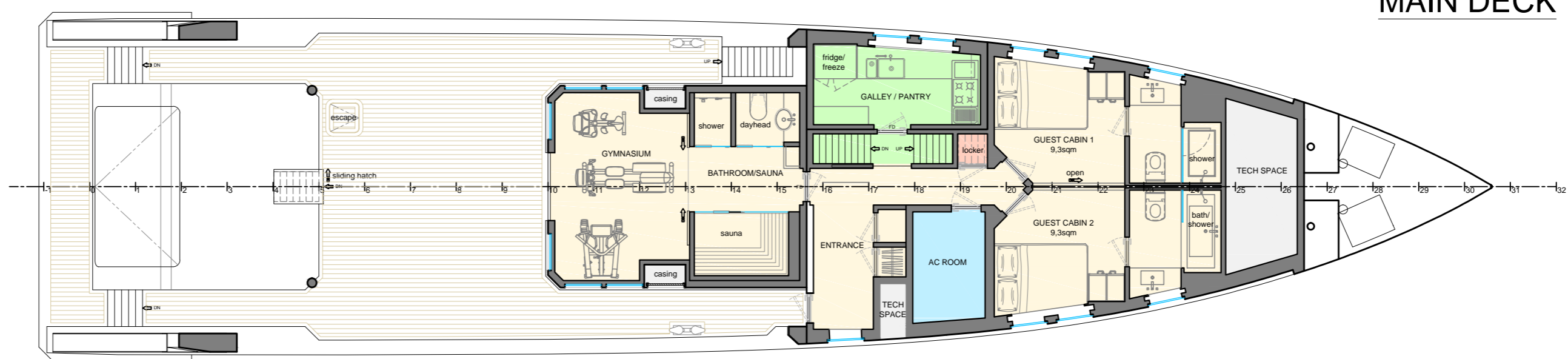
FRONT VIEW



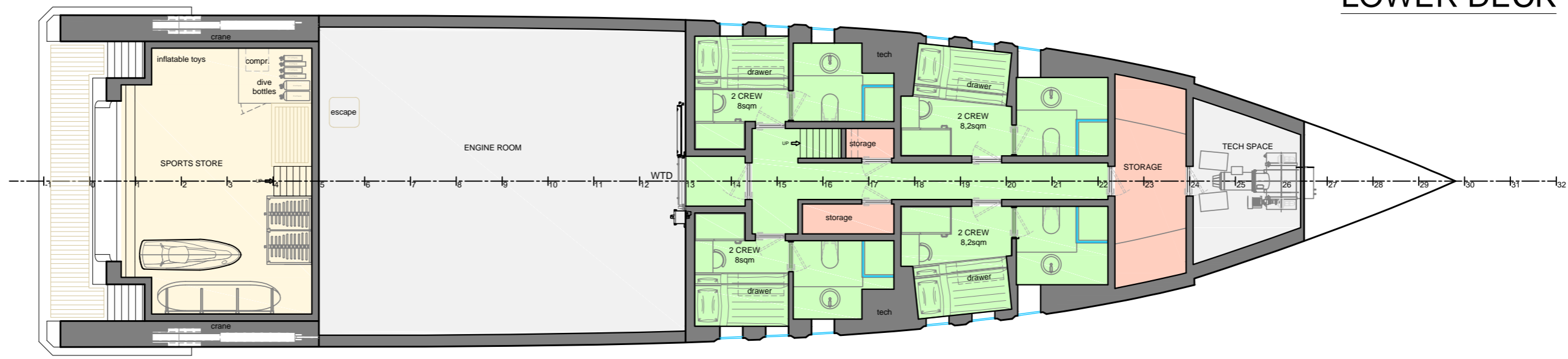
TOP VIEW



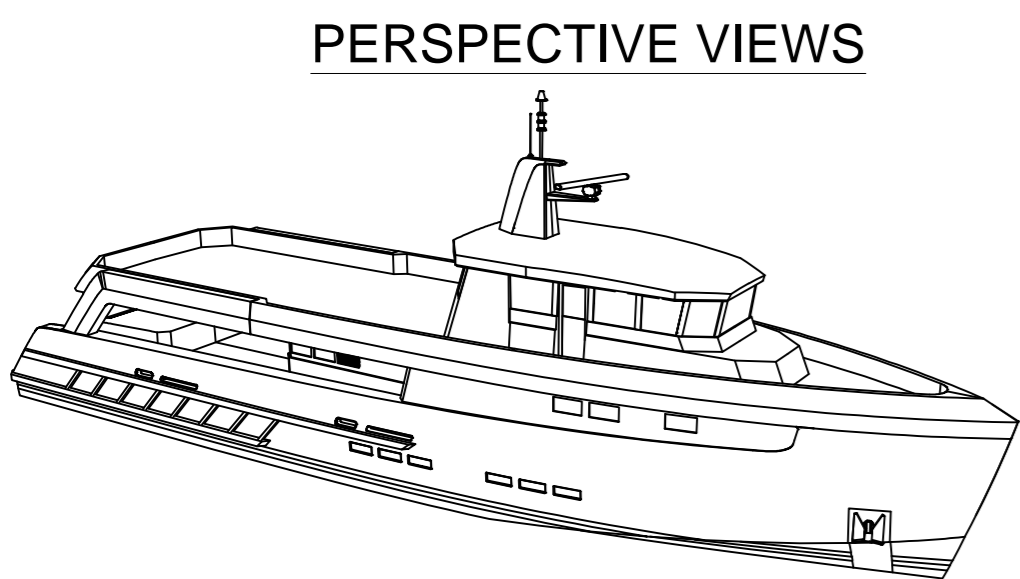
WHEELHOUSE DECK



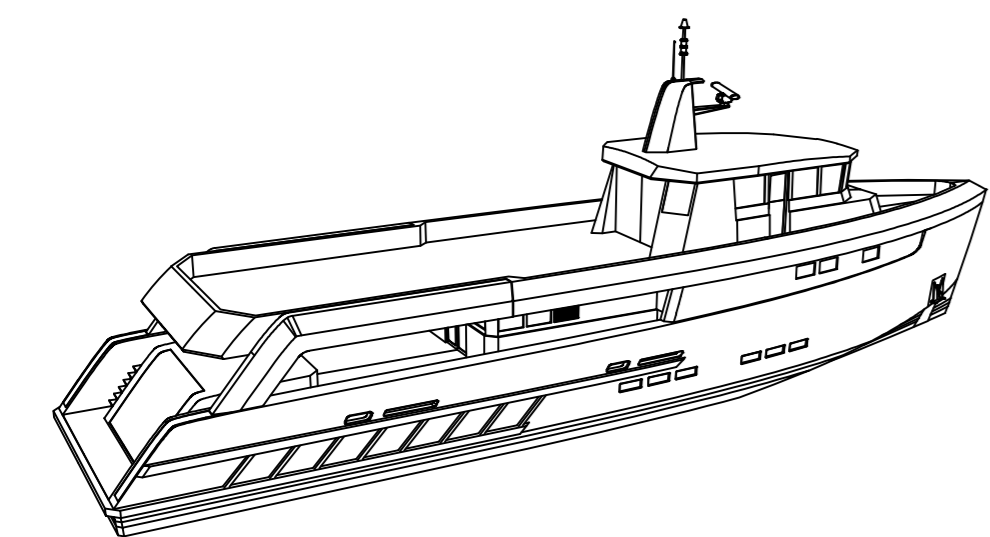
MAIN DECK



LOWER DECK



PERSPECTIVE VIEWS



COLOR LEGENDA

LUXURY AREA	
CREW AREA	
STORAGE	
TECH SPACE	
AC ROOMS	

**PRINCIPAL DIMENSIONS:**

LENGTH OVERALL	32.00 [m]
LENGTH WATERLINE (D.W.L.)	30.46 [m]
BEAM MOULDED (APPR.)	7.30 [m]
DEPTH MOULDED (MIDSHIPS AT SIDE)	3.75 [m]
DESIGN DRAFT	1.95 [m]
FRAME SPACING	1000 [mm]
SPEED MAX	16 [kn]
SPEED LONG DISTANCE	12 [kn] @ 5500nm
GT	UNDER 400 GT

**VESSEL NOTATION:**  
 LLOYDS REGISTER: P 100A1 SSC, YACHT MONO G6, P.L.M.C., CCS, SCM  
 FLAG AUTHORITY: CAYMAN ISLANDS SHIPPING REGISTRY

Wilhelminastraat 43 A / 2011 VK Haarlem  
 P.O. Box 409 / 2100 AK Heemstede / The Netherlands  
 T +31(0)23 548 30 10 / F +31(0)23 547 17 60  
 info@azure-na.com / www.azure-na.com

**AZURE**  
 YACHT DESIGN & NAVAL ARCHITECTURE

■ Yacht Design ■ Naval Architecture ■ Interior Design ■ Engineering ■ Supervision & Support

THE DRAWING, INCLUDING THE ORIGINAL DESIGN AND CONCEPTS OF AZURE NAVAL ARCHITECTURE IS THE PROPERTY OF AZURE NAVAL ARCHITECTURE BY WHICH ANY REPRODUCTION OR MODIFICATION WITHOUT PERMISSION IS PROHIBITED.

PROJECT TITLE		32.00 M SHADOW VESSEL					
YARD NO.	PROJECT NO.	DRAWING NO.					
	P438	D-13					
DRAWING TITLE							
GENERAL ARRANGEMENT							
SCALE	DRAWN	SIZE	DESIGN DATE	UNITS	SHEET	AZURE DRAWING NO.	REV.
1 : 100	RvD	A1P	24-06-13	mm	01-01	D-13	0